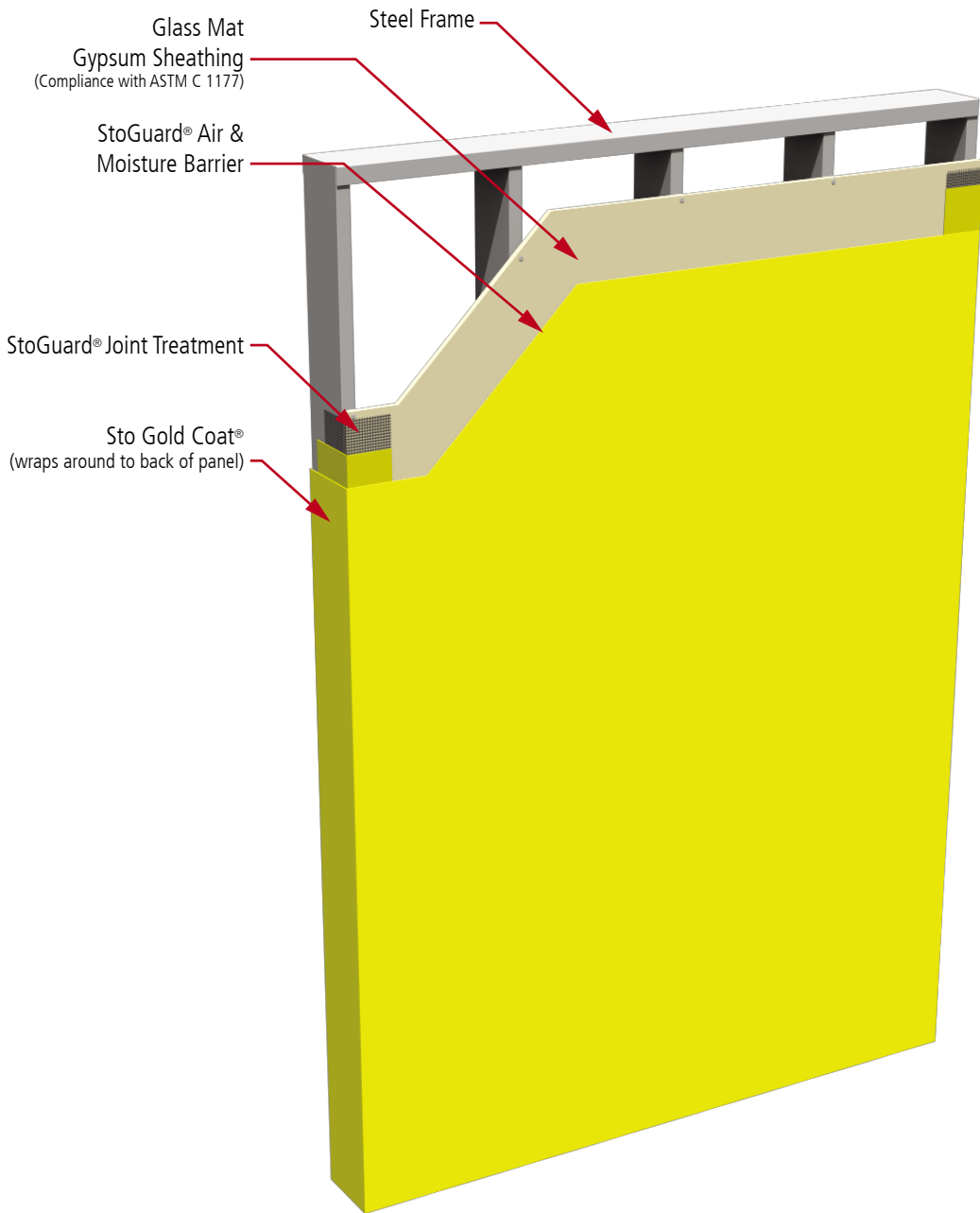


stopanel™ Backup



Notes:

1. Description: lightweight energy efficient pre-fabricated exterior wall panel with exterior continuous air and moisture barrier.

2. Building Code Compliance: meets requirements of NFPA 285 and NFPA 268 for use on noncombustible construction (Types I-IV). Refer to ICC ESR 1233 and HAI Project No. 1JJB05184.001.

IBC 2009, 2012 and 2015
Chapter 7: Fire Resistance Rated Construction
Chapter 16: Structural - Transverse Wind Load Resistance
Chapter 26: Types I-IV (noncombustible) Construction, Ignition Resistance, Surface Burning Characteristics

IECC 2009, 2012 and 2015
Chapter 4: Continuous Air Barrier
IGCC 2012
Chapter 6: Energy Conservation, Efficiency and Atmospheric Quality (Section 606: Building Thermal Envelope insulation and Air Sealing)
Alternative Compliance Path: ASHRAE 189.1-2009

3. Energy Standards Compliance
ASHRAE 90.1 - 2007, 2010 and 2013
Section 5: Continuous Air Barrier

4. Green Building Standards Compliance
ASHRAE 189.1 - 2009
Normative Appendix B: Continuous Air Barrier

5. LEED Eligibility
Eligible contribution towards credits in the following NC (New Construction) categories:
Energy and Atmosphere (EA)
Materials and Resources (MR)
Innovation in Design (ID)

ATTENTION

Sto products are intended for use by qualified professional contractors, not consumers, as a component of a larger construction assembly as specified by a qualified design professional, general contractor or builder. They should be installed in accordance with those specifications and Sto's instructions. Sto Corp. disclaims all, and assumes no, liability for on-site inspections, for its products applied improperly, or by unqualified persons or entities, or as part of an improperly designed or constructed building, for the nonperformance of adjacent building components or assemblies, of for other construction activities beyond Sto's control. Improper use of Sto products or use as part of an improperly designed or constructed larger assembly or building may result in serious damage to Sto products, and to the structure of the building or its components.

STO CORP. DISCLAIMS ALL WARRANTIES EXPRESSED OR IMPLIED EXCEPT FOR EXPLICIT LIMITED WRITTEN WARRANTIES ISSUED TO AND ACCEPTED BY BUILDING OWNERS IN ACCORDANCE WITH STO'S WARRANTY PROGRAMS WHICH ARE SUBJECT TO CHANGE FROM TIME TO TIME. For the fullest, most current information on proper application, clean-up, mixing and other specifications and warranties, cautions and disclaimers, please refer to the Sto Corp. website, www.stocorp.com.

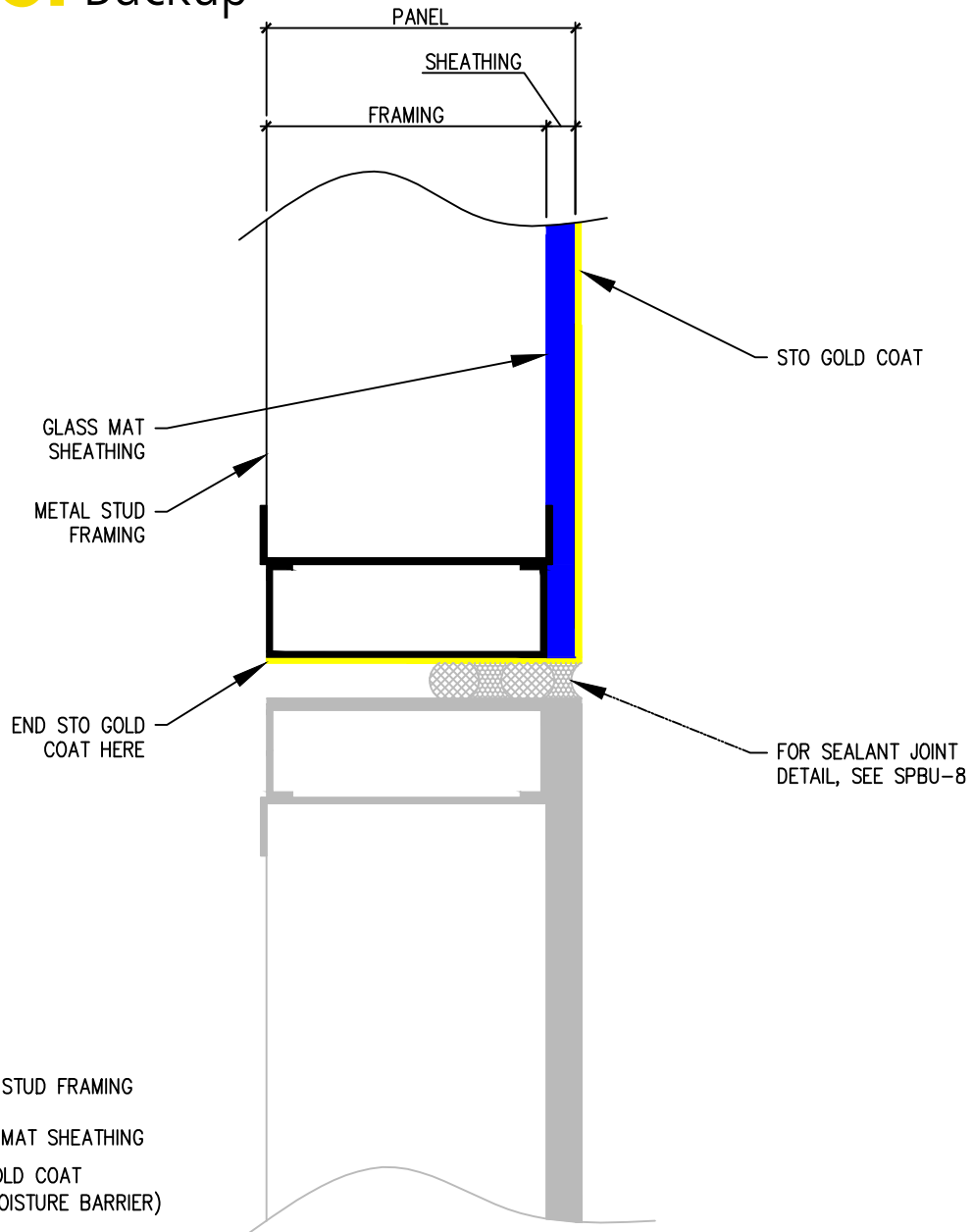
stopanel™

Sto Panel Technology

3800 Camp Creek Parkway
Building 1400, Suite 120
Atlanta, Georgia 30331
Phone: (888) 227-8334 Fax: (856) 690-0100
www.stopanel.com

PROJECT:				
ARCHITECTS:				
CONSTRUCTION MGR.:				
TITLE:				
SCALE:	DATE:	REVISION:	PROJ.N°:	DWG N°:

sto panel™ Backup



ATTENTION

Sto products are intended for use by qualified professional contractors, not consumers, as a component of a larger construction assembly as specified by a qualified design professional, general contractor or builder. They should be installed in accordance with those specifications and Sto's instructions. Sto Corp. disclaims all, and assumes no, liability for on-site inspections, for its products applied improperly, or by unqualified persons or entities, or as part of an improperly designed or constructed building, for the nonperformance of adjacent building components or assemblies, or for other construction activities beyond Sto's control. Improper use of Sto products or use as part of an improperly designed or constructed larger assembly or building may result in serious damage to Sto products, and to the structure of the building or its components.

STO CORP. DISCLAIMS ALL WARRANTIES EXPRESSED OR IMPLIED EXCEPT FOR EXPLICIT LIMITED WRITTEN WARRANTIES ISSUED TO AND ACCEPTED BY BUILDING OWNERS IN ACCORDANCE WITH STO'S WARRANTY PROGRAMS WHICH ARE SUBJECT TO CHANGE FROM TIME TO TIME. For the fullest, most current information on proper application, clean-up, mixing and other specifications and warranties, cautions and disclaimers, please refer to the Sto Corp. website, www.stocorp.com.

sto panel

Sto Panel Technology

3800 Camp Creek Parkway
 Building 1400, Suite 120
 Atlanta, Georgia 30331
 Phone: (888) 227-8334 Fax: (856) 690-0100
www.stopanel.com

PROJECT:

ARCHITECTS:

CONSTRUCTION MGR.:

TITLE: StoPanel Back-Up:
 TYPICAL BOTTOM OF PANEL DETAIL

SCALE:

DATE:

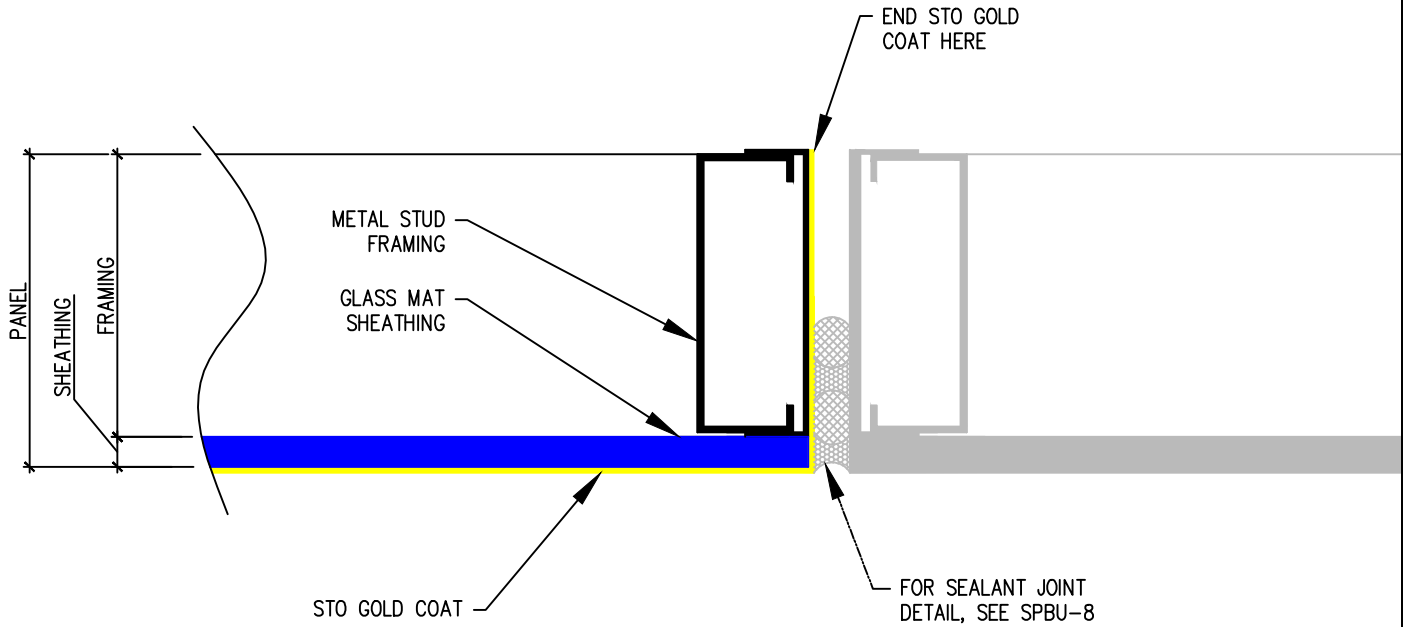
REVISION:

PROJ.No:

DWG No:

SPBU-3

sto panel™ Backup



- METAL STUD FRAMING
- GLASS MAT SHEATHING
- STO GOLD COAT
(AIR/MOISTURE BARRIER)

ATTENTION

Sto products are intended for use by qualified professional contractors, not consumers, as a component of a larger construction assembly as specified by a qualified design professional, general contractor or builder. They should be installed in accordance with those specifications and Sto's instructions. Sto Corp. disclaims all, and assumes no, liability for on-site inspections, for its products applied improperly, or by unqualified persons or entities, or as part of an improperly designed or constructed building, for the nonperformance of adjacent building components or assemblies, or for other construction activities beyond Sto's control. Improper use of Sto products or use as part of an improperly designed or constructed larger assembly or building may result in serious damage to Sto products, and to the structure of the building or its components.

STO CORP. DISCLAIMS ALL WARRANTIES EXPRESSED OR IMPLIED EXCEPT FOR EXPLICIT LIMITED WRITTEN WARRANTIES ISSUED TO AND ACCEPTED BY BUILDING OWNERS IN ACCORDANCE WITH STO'S WARRANTY PROGRAMS WHICH ARE SUBJECT TO CHANGE FROM TIME TO TIME. For the fullest, most current information on proper application, clean-up, mixing and other specifications and warranties, cautions and disclaimers, please refer to the Sto Corp. website, www.stocorp.com.

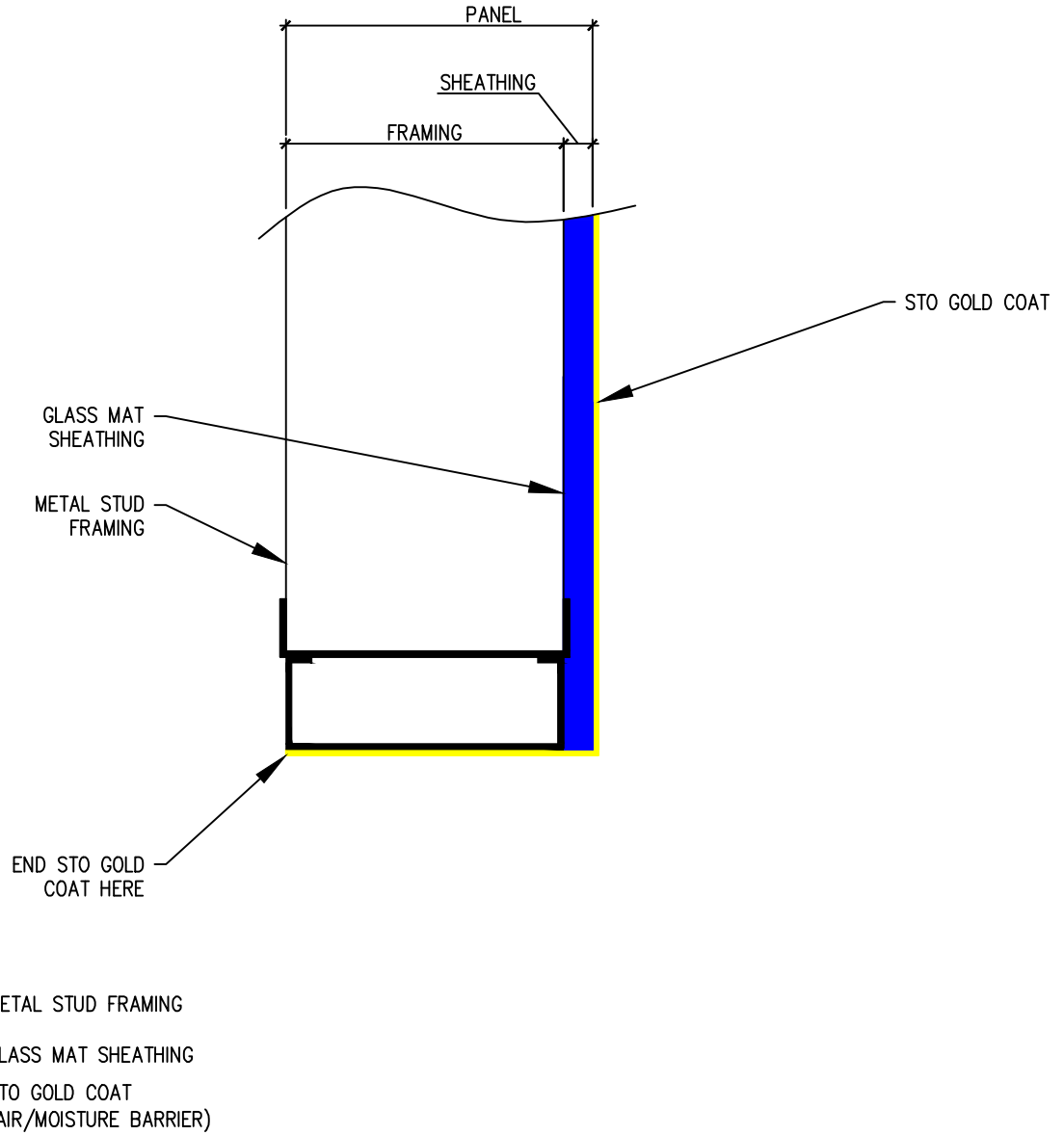
sto panel

Sto Panel Technology

3800 Camp Creek Parkway
 Building 1400, Suite 120
 Atlanta, Georgia 30331
 Phone: (888) 227-8334 Fax: (856) 690-0100
www.stopanel.com

PROJECT:				
ARCHITECTS:				
CONSTRUCTION MGR.:				
TITLE: StoPanel Back-Up: TYPICAL EDGE OF PANEL DETAIL				
SCALE:	DATE:	REVISION:	PROJ.No:	DWG No: SPBU-2

stoperpanel™ Backup



- METAL STUD FRAMING
- GLASS MAT SHEATHING
- STO GOLD COAT
(AIR/MOISTURE BARRIER)

ATTENTION

Sto products are intended for use by qualified professional contractors, not consumers, as a component of a larger construction assembly as specified by a qualified design professional, general contractor or builder. They should be installed in accordance with those specifications and Sto's instructions. Sto Corp. disclaims all, and assumes no, liability for on-site inspections, for its products applied improperly, or by unqualified persons or entities, or as part of an improperly designed or constructed building, for the nonperformance of adjacent building components or assemblies, or for other construction activities beyond Sto's control. Improper use of Sto products or use as part of an improperly designed or constructed larger assembly or building may result in serious damage to Sto products, and to the structure of the building or its components.

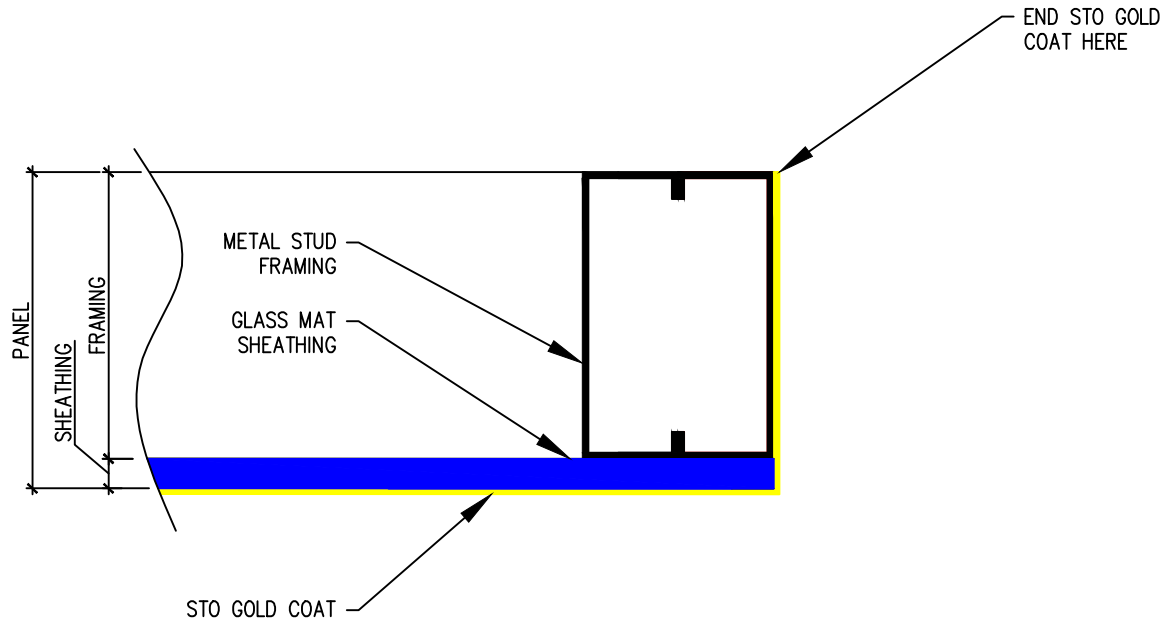
STO CORP. DISCLAIMS ALL WARRANTIES EXPRESSED OR IMPLIED EXCEPT FOR EXPLICIT LIMITED WRITTEN WARRANTIES ISSUED TO AND ACCEPTED BY BUILDING OWNERS IN ACCORDANCE WITH STO'S WARRANTY PROGRAMS WHICH ARE SUBJECT TO CHANGE FROM TIME TO TIME. For the fullest, most current information on proper application, clean-up, mixing and other specifications and warranties, cautions and disclaimers, please refer to the Sto Corp. website, www.stocorp.com.



Sto Panel Technology

3800 Camp Creek Parkway
 Building 1400, Suite 120
 Atlanta, Georgia 30331
 Phone: (888) 227-8334 Fax: (856) 690-0100
www.stoperpanel.com

PROJECT:				
ARCHITECTS:				
CONSTRUCTION MGR.:				
TITLE: StoPanel Back-Up: TYPICAL HEAD OF WINDOW DETAIL				
SCALE:	DATE:	REVISION:	PROJ.No:	DWG No: SPBU-4



- METAL STUD FRAMING
- GLASS MAT SHEATHING
- STO GOLD COAT (AIR/MOISTURE BARRIER)

ATTENTION

Sto products are intended for use by qualified professional contractors, not consumers, as a component of a larger construction assembly as specified by a qualified design professional, general contractor or builder. They should be installed in accordance with those specifications and Sto's instructions. Sto Corp. disclaims all, and assumes no, liability for on-site inspections, for its products applied improperly, or by unqualified persons or entities, or as part of an improperly designed or constructed building, for the nonperformance of adjacent building components or assemblies, or for other construction activities beyond Sto's control. Improper use of Sto products or use as part of an improperly designed or constructed larger assembly or building may result in serious damage to Sto products, and to the structure of the building or its components.

STO CORP. DISCLAIMS ALL WARRANTIES EXPRESSED OR IMPLIED EXCEPT FOR EXPLICIT LIMITED WRITTEN WARRANTIES ISSUED TO AND ACCEPTED BY BUILDING OWNERS IN ACCORDANCE WITH STO'S WARRANTY PROGRAMS WHICH ARE SUBJECT TO CHANGE FROM TIME TO TIME. For the fullest, most current information on proper application, clean-up, mixing and other specifications and warranties, cautions and disclaimers, please refer to the Sto Corp. website, www.stocorp.com.

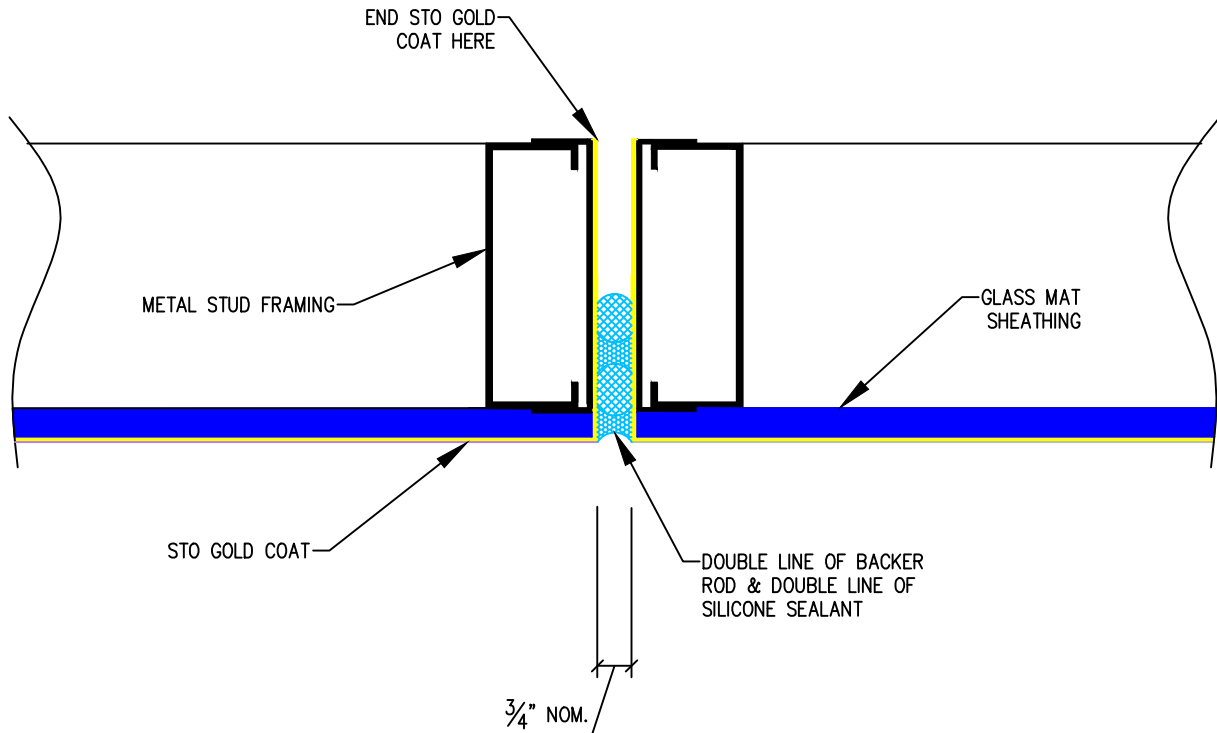


Sto Panel Technology

3800 Camp Creek Parkway
 Building 1400, Suite 120
 Atlanta, Georgia 30331
 Phone: (888) 227-8334 Fax: (856) 690-0100
www.stopanel.com

PROJECT:				
ARCHITECTS:				
CONSTRUCTION MGR.:				
TITLE: StoPanel Back-Up: TYPICAL JAMB OF WINDOW DETAIL				
SCALE:	DATE:	REVISION:	PROJ.No:	DWG No: SPBU-5

sto panel™ Backup



- METAL STUD FRAMING
- GLASS MAT SHEATHING
- STO GOLD COAT (AIR/MOISTURE BARRIER)

ATTENTION

Sto products are intended for use by qualified professional contractors, not consumers, as a component of a larger construction assembly as specified by a qualified design professional, general contractor or builder. They should be installed in accordance with those specifications and Sto's instructions. Sto Corp. disclaims all, and assumes no, liability for on-site inspections, for its products applied improperly, or by unqualified persons or entities, or as part of an improperly designed or constructed building, for the nonperformance of adjacent building components or assemblies, or for other construction activities beyond Sto's control. Improper use of Sto products or use as part of an improperly designed or constructed larger assembly or building may result in serious damage to Sto products, and to the structure of the building or its components.

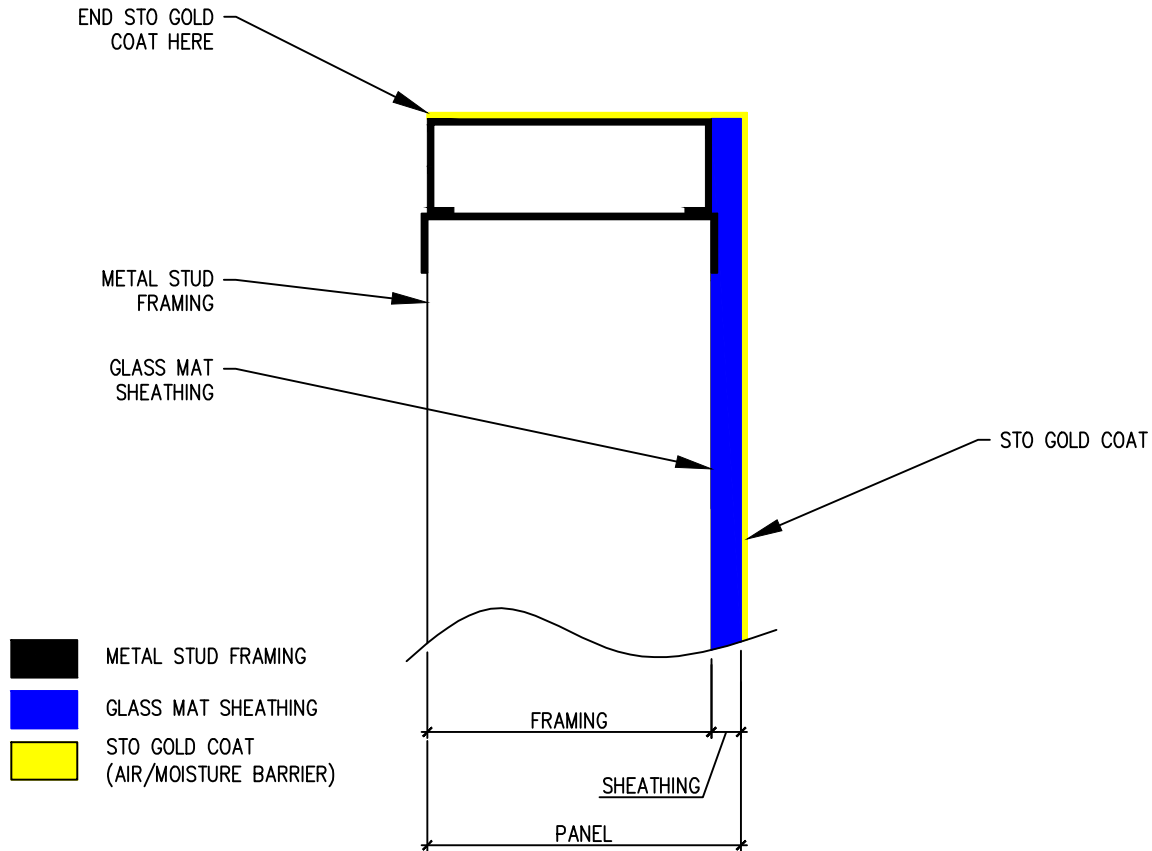
STO CORP. DISCLAIMS ALL WARRANTIES EXPRESSED OR IMPLIED EXCEPT FOR EXPLICIT LIMITED WRITTEN WARRANTIES ISSUED TO AND ACCEPTED BY BUILDING OWNERS IN ACCORDANCE WITH STO'S WARRANTY PROGRAMS WHICH ARE SUBJECT TO CHANGE FROM TIME TO TIME. For the fullest, most current information on proper application, clean-up, mixing and other specifications and warranties, cautions and disclaimers, please refer to the Sto Corp. website, www.stocorp.com.

sto panel

Sto Panel Technology

3800 Camp Creek Parkway
 Building 1400, Suite 120
 Atlanta, Georgia 30331
 Phone: (888) 227-8334 Fax: (856) 690-0100
www.stopanel.com

PROJECT:				
ARCHITECTS:				
CONSTRUCTION MGR.:				
TITLE: StoPanel Back-Up: TYPICAL SEALANT JOINT DETAIL				
SCALE:	DATE:	REVISION:	PROJ.No:	DWG No: SPBU-7



ATTENTION

Sto products are intended for use by qualified professional contractors, not consumers, as a component of a larger construction assembly as specified by a qualified design professional, general contractor or builder. They should be installed in accordance with those specifications and Sto's instructions. Sto Corp. disclaims all, and assumes no, liability for on-site inspections, for its products applied improperly, or by unqualified persons or entities, or as part of an improperly designed or constructed building, for the nonperformance of adjacent building components or assemblies, or for other construction activities beyond Sto's control. Improper use of Sto products or use as part of an improperly designed or constructed larger assembly or building may result in serious damage to Sto products, and to the structure of the building or its components.

STO CORP. DISCLAIMS ALL WARRANTIES EXPRESSED OR IMPLIED EXCEPT FOR EXPLICIT LIMITED WRITTEN WARRANTIES ISSUED TO AND ACCEPTED BY BUILDING OWNERS IN ACCORDANCE WITH STO'S WARRANTY PROGRAMS WHICH ARE SUBJECT TO CHANGE FROM TIME TO TIME. For the fullest, most current information on proper application, clean-up, mixing and other specifications and warranties, cautions and disclaimers, please refer to the Sto Corp. website, www.stocorp.com.

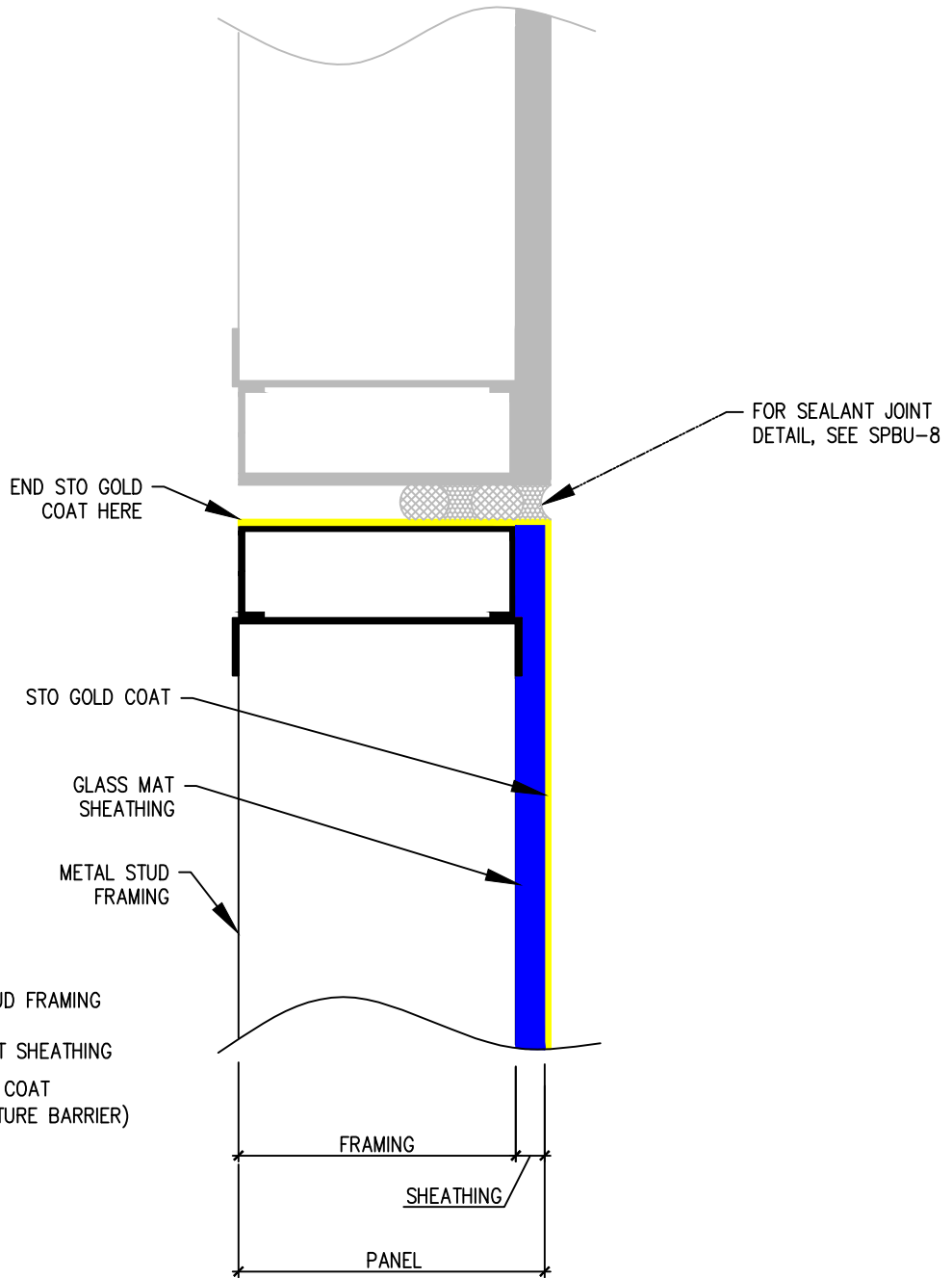


Sto Panel Technology

3800 Camp Creek Parkway
 Building 1400, Suite 120
 Atlanta, Georgia 30331
 Phone: (888) 227-8334 Fax: (856) 690-0100
www.stopanel.com

PROJECT:				
ARCHITECTS:				
CONSTRUCTION MGR.:				
TITLE: StoPanel Back-Up: TYPICAL SILL OF WINDOW DETAIL				
SCALE:	DATE:	REVISION:	PROJ.No:	DWG No: SPBU-6

stoperpanel™ Backup



ATTENTION

Sto products are intended for use by qualified professional contractors, not consumers, as a component of a larger construction assembly as specified by a qualified design professional, general contractor or builder. They should be installed in accordance with those specifications and Sto's instructions. Sto Corp. disclaims all, and assumes no, liability for on-site inspections, for its products applied improperly, or by unqualified persons or entities, or as part of an improperly designed or constructed building, for the nonperformance of adjacent building components or assemblies, or for other construction activities beyond Sto's control. Improper use of Sto products or use as part of an improperly designed or constructed larger assembly or building may result in serious damage to Sto products, and to the structure of the building or its components.

STO CORP. DISCLAIMS ALL WARRANTIES EXPRESSED OR IMPLIED EXCEPT FOR EXPLICIT LIMITED WRITTEN WARRANTIES ISSUED TO AND ACCEPTED BY BUILDING OWNERS IN ACCORDANCE WITH STO'S WARRANTY PROGRAMS WHICH ARE SUBJECT TO CHANGE FROM TIME TO TIME. For the fullest, most current information on proper application, clean-up, mixing and other specifications and warranties, cautions and disclaimers, please refer to the Sto Corp. website, www.stocorp.com.



Sto Panel Technology

3800 Camp Creek Parkway
 Building 1400, Suite 120
 Atlanta, Georgia 30331
 Phone: (888) 227-8334 Fax: (856) 690-0100
www.stoperpanel.com

PROJECT:				
ARCHITECTS:				
CONSTRUCTION MGR.:				
TITLE: StoPanel Back-Up: TYPICAL TOP OF PANEL DETAIL				
SCALE:	DATE:	REVISION:	PROJ.No:	DWG No: SPBU-1